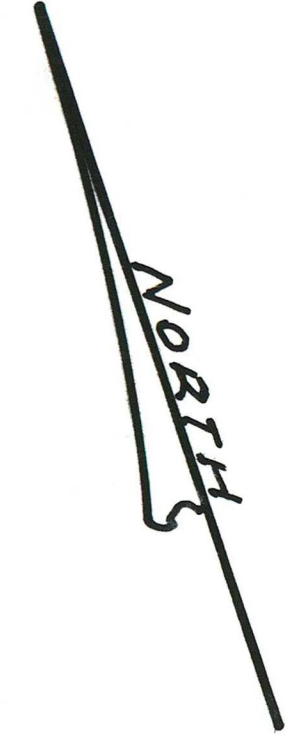
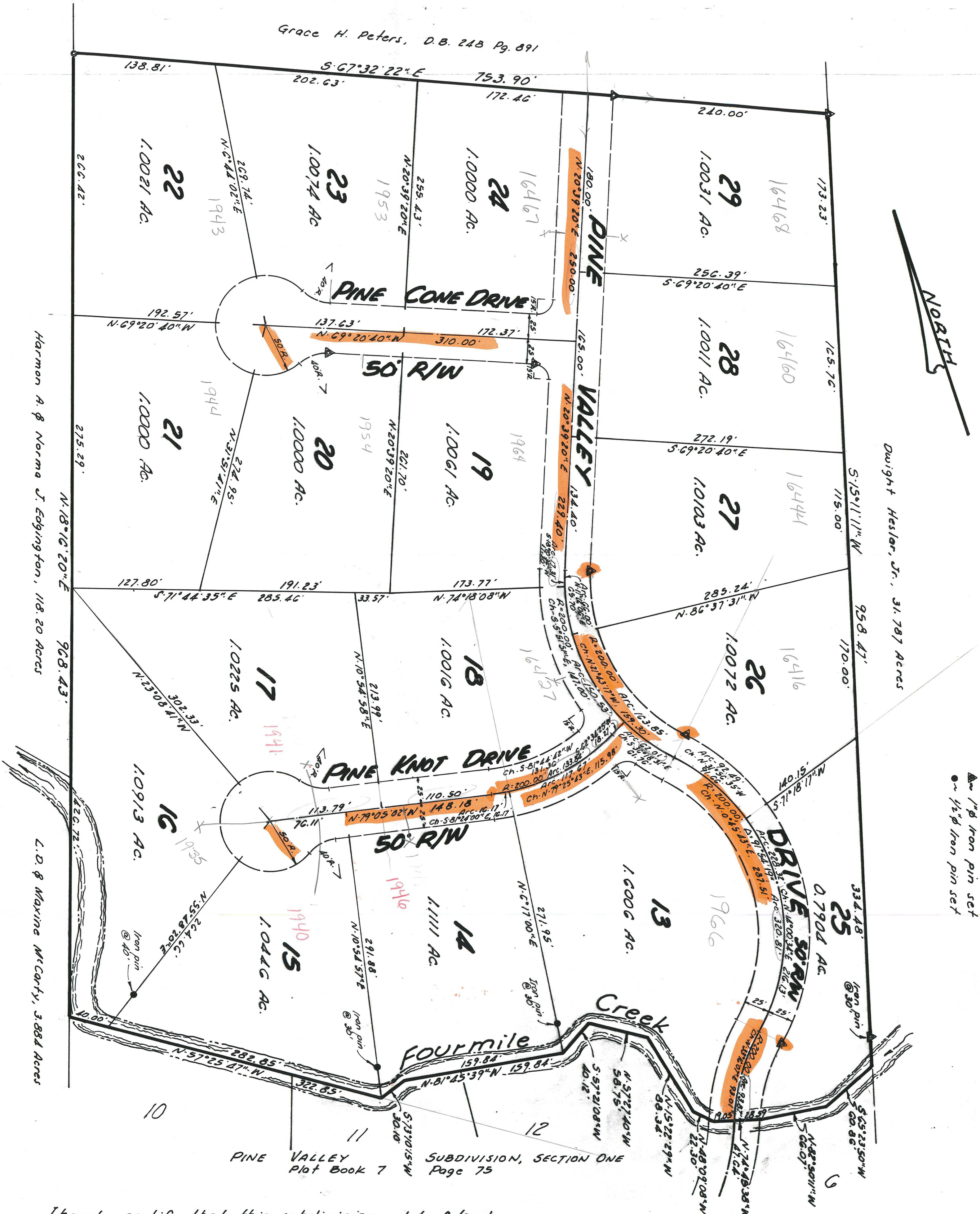


67 32 22
 20 34 22
 88 11 42
 87 11 42

Grace H. Peters, D.B. 248 Pg. 891



LEGEND
 ● 1/4" iron pin set
 ○ 1/2" iron pin set

Harmon A. & Norma J. Edgington, 118.20 Acres

Dwight Hessler, Jr., 31.787 Acres

L.O. & Maxine McCarty, 3.884 Acres

PINE VALLEY SUBDIVISION, SECTION ONE
 Plat Book 7 Page 75

I hereby certify that this subdivision plot of land is a correct representation of the land surveyed and plotted. The lot corners have been pinned and iron pins were set 25.00 feet from the center-line of the road(s) on the lot lines, unless otherwise noted. Reference monuments have been set as shown.

Gerald S. Renshaw
 Gerald S. Renshaw, P.S.# 4872



ENGINEER'S APPROVAL

I hereby approve the general layout of PINE VALLEY SUBDIVISION, SECTION TWO, as shown on this plat.

Brown County Engineer

PINE VALLEY SUBDIVISION SECTION TWO

LOCATED IN HENRY WHITINGS MILITARY SURVEY # 909
 STERLING TOWNSHIP, BROWN COUNTY, OHIO
 SCALE - 1" = 60'

CONTAINING 17.699 ACRES

